



EXHAUST COMPONENTS
Made in Italy





Dal 1993
una storia di passione tutta italiana

From 1993
A story of passion all italian

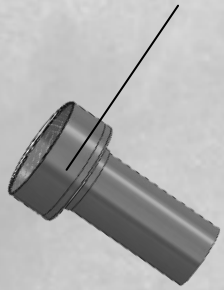
COSTRUISCI IL TUO SCARICO SPECIALE

HP Corse Special Lab lavora a stretto contatto con i migliori preparatori nazionali ed internazionali di "SPECIAL". Fornisce direttamente i silenziatori della serie HYDROFORM, EVOLUZIONE e GP-07 in kit di assemblaggio, con staffa standard, ganci e molla, db-killer a scelta e una linea di raccordi e curve che soddisfino ogni esigenza costruttiva.

BUILD YOUR SPECIAL EXHAUST

HP Corse "laboratory" works closely with the best national and international operators of "SPECIAL" moto's. We manufacture in our own workshops prototypes directly on the customer's motorbike or we supply single terminals of HYDROFORM, EVOLUZIONE and GP-07 series to those who desire to build the exhaust system on their own. We also produce customized curves and flanges.

9)-DB.-KILLER



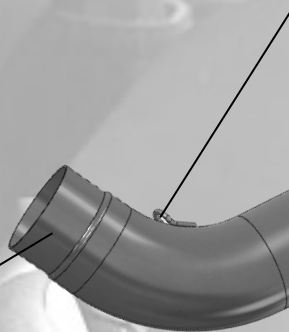
1) SILENZIATORE
MUFFLER



5) MOLLA
SPRING



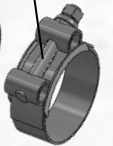
6) GANCIO MOLLA
HOOK SPRING



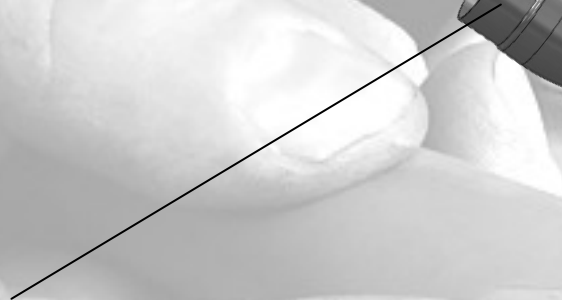
3) TUBO CURVATO
BENDED PIPE



8) FASCETTA
METAL-CLAMP



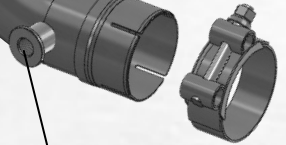
2) IMBOCCO FEMMINA
FEMALE WELDING JOINT



4) RIDUZIONE CONICA
CONCENTRIC REDUCTION



7) LAMBDA SENSOR





ciò che serve/what you need

- 1) SILENZIATORE/*MUFFLER*
- 2) IMBOCCO FEMM./*FEMALE WELDING JOINT*
- 3) TUBO CURVATO/*BENDED PIPE*
- 4) RIDUZIONE CONICA/*CONCENTRIC REDUCTION*
- 5) MOLLA OSCILLANTE/*SWIVEL HOOK SPRING*
- 6) GANCI PER MOLLE/*HOOK SPRING*
- 7) LAMBDA SENSOR
- 8) FASCETTE/*METAL CLAMP*
- 9) DB-KILLER



Mufflers

HYDROFORM



STAINLESS BRACKET Thk 2.5

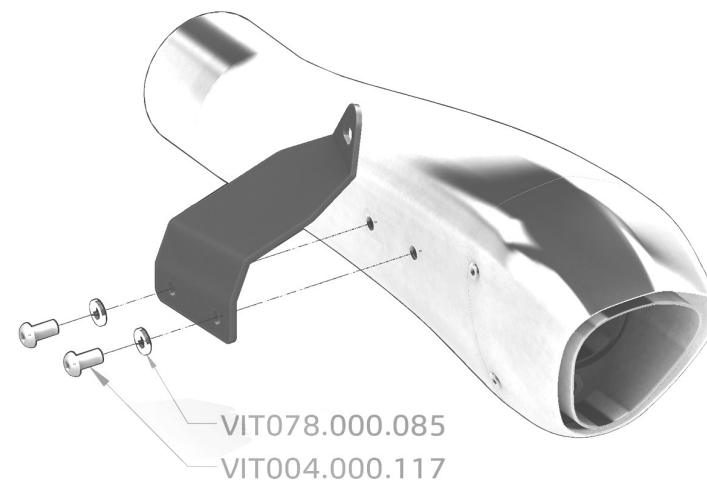
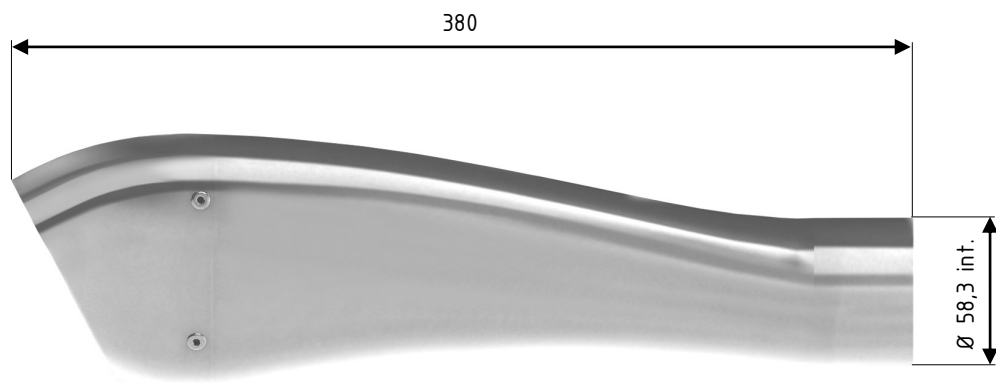
Cod. PAM.005.227

HYDROFORM (DESTRO-RIGHT)

Cod. PAM.005.182

HYDROFORM (SINISTRO-LEFT)

Cod. PAM.005.234



DB-KILLER Ø 30 mm

Cod. PAM.005.219



DB-KILLER Ø 35 mm

Cod. PAM.005.220



DB-KILLER Ø 40 mm

Cod. PAM.005.193



Mufflers

HYDROFORM

CLASSIC

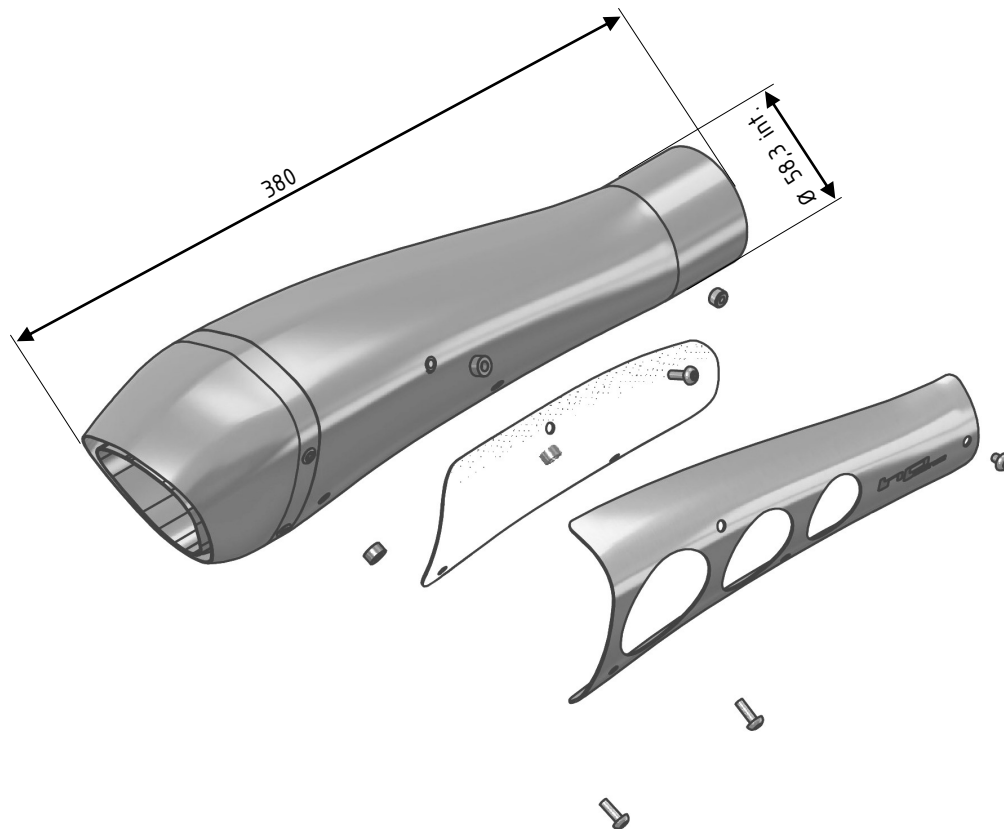
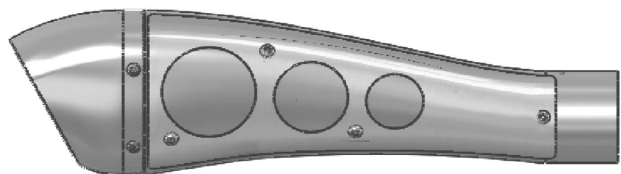


STAINLESS BRACKET Thk 2.5

Cod. PAM.005.227

HYDROFORM-CLASSIC (DESTRO-RIGHT)

Cod. PAM.005.162



VIT078.000.085
VIT004.000.117



DB-KILLER Ø 30 mm

Cod. PAM.005.219



DB-KILLER Ø 35 mm

Cod. PAM.005.220



DB-KILLER Ø 40 mm

Cod. PAM.005.193



Mufflers

HYDROFORM

CORSA



STAINLESS BRACKET Thk 2.5

Cod. PAM.005.227

HYDROFORM-CORSA (DESTRO-RIGHT)

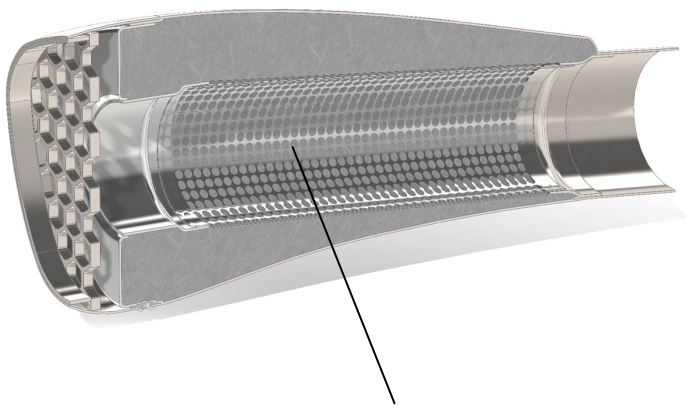
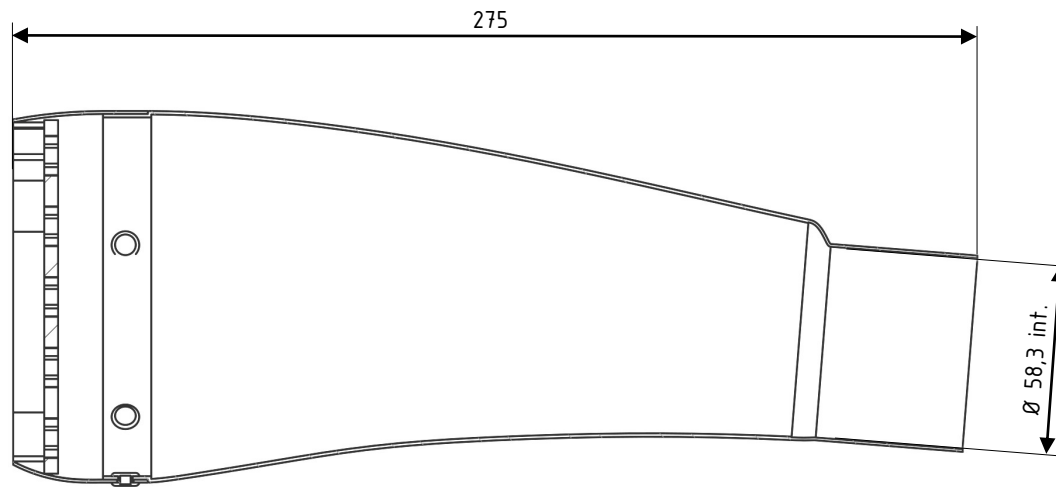
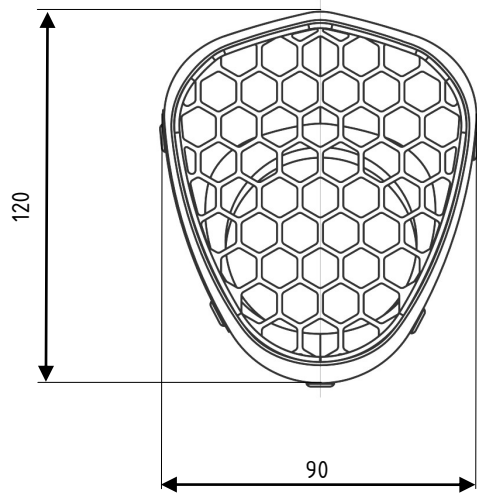
Cod. PAM.005.197 Megaphone

Cod. PAM.005.198 Silencer

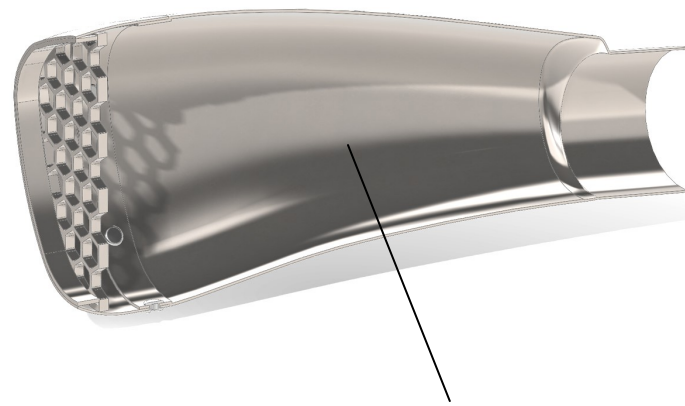
HYDROFORM-CORSA (SINISTRO-LEFT)

Cod. PAM.005.236 Megaphone

Cod. PAM.005.238 Silencer



SILENCER with acustic components and internal sound proofing



MEGAOPHONE without acustic components and internal sound proofing



Mufflers

GP-07



GP-07 SILVER (DESTRO-RIGHT)

Cod. PAM.005.187

hpcorse
MADE IN ITALY

GP-07 SILVER (SINISTRO-LEFT)

Cod. PAM.005.231



GP-07 BLACK (DESTRO-RIGHT)

Cod. PAM.005.225

hpcorse
MADE IN ITALY

GP-07 BLACK (SINISTRO-LEFT)

Cod. PAM.005.240



DB-KILLER Ø 40 mm

Cod. PAM.005.082 GRID



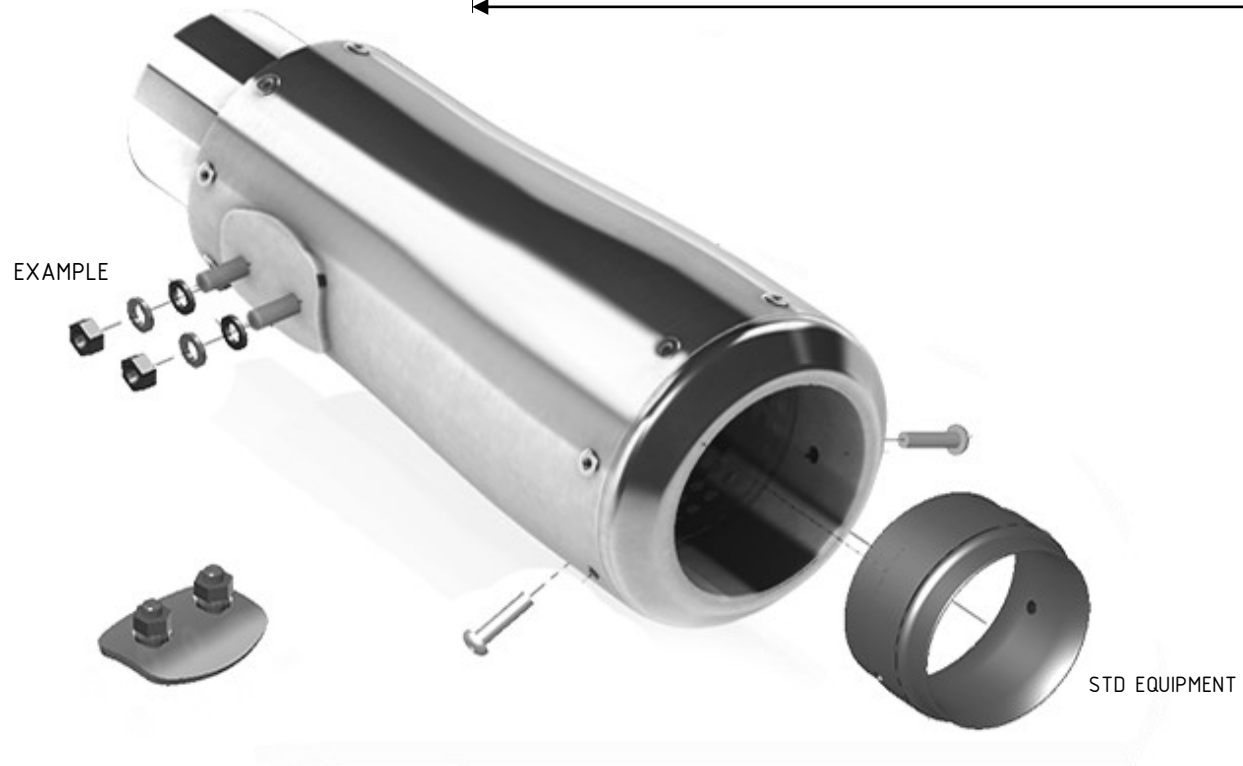
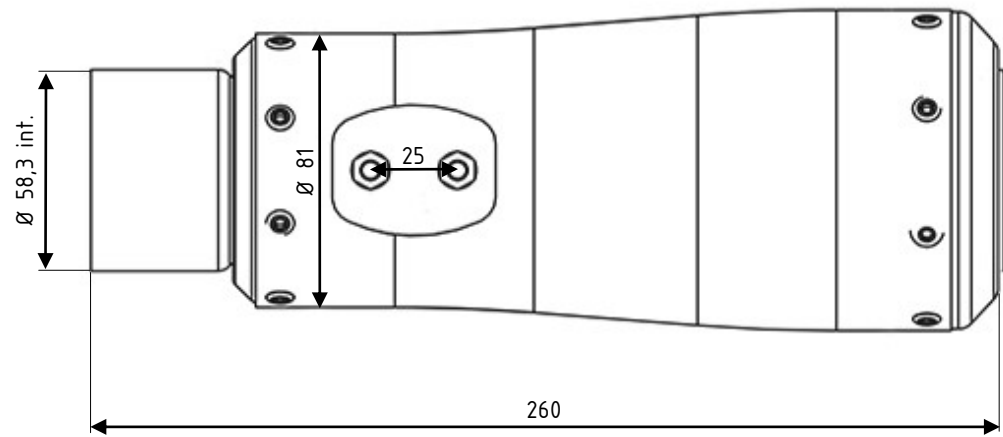
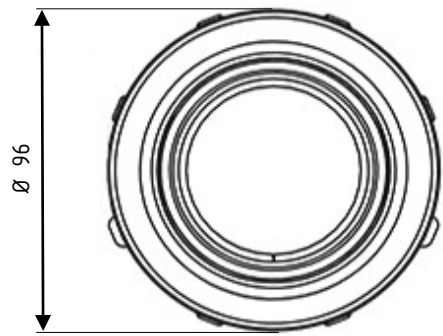
DB-KILLER Ø 40 mm

Cod. PAM.005.084 RING



STAINLESS BRACKET Thk 2.5

Cod. PAM.005.218





Mufflers

EVOXTREME



EVOXTREME BLACK (DESTRO-RIGHT)

Cod. PAM.005.155

EVOXTREME BLACK (SINISTRO-LEFT)

Cod. PAM.005.242

EVOXTREME SILVER (DESTRO-RIGHT)

Cod. PAM.005.156

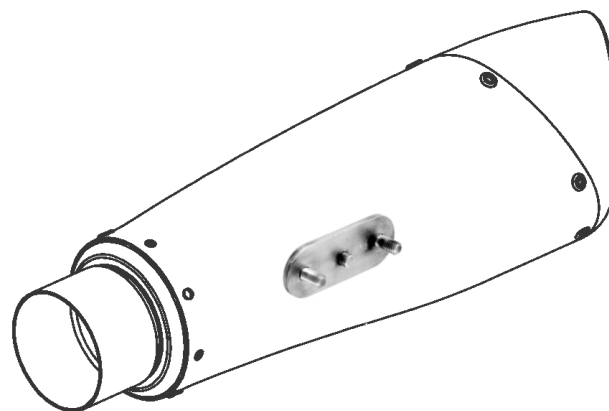
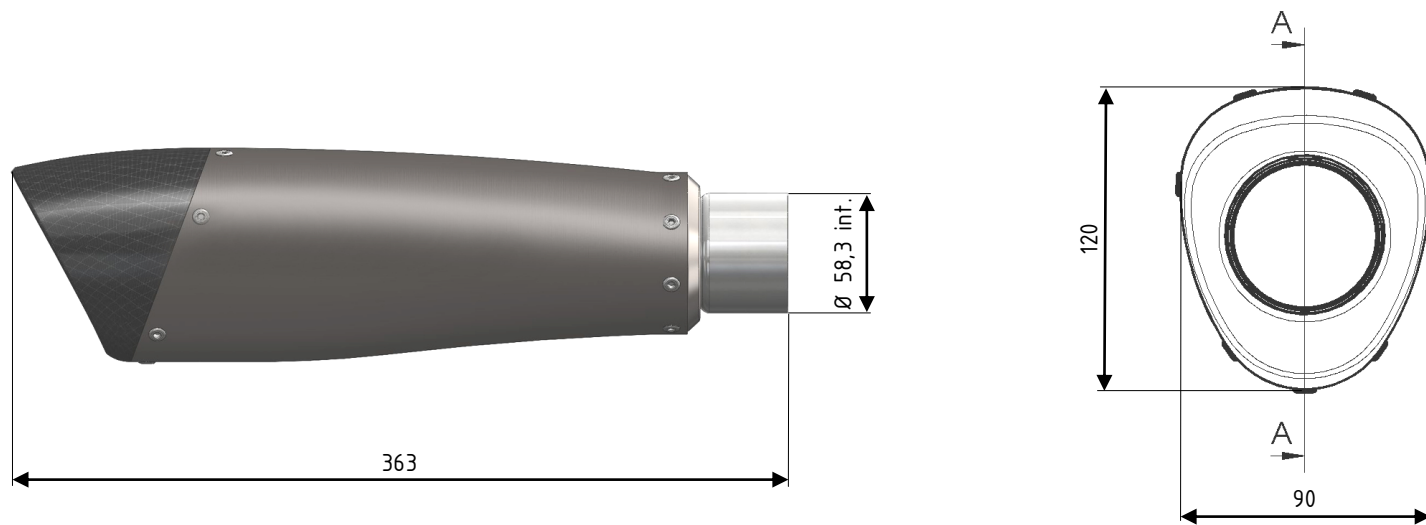
EVOXTREME SILVER (SINISTRO-LEFT)

Cod. PAM.005.243



STAINLESS BRACKET Thk 1.2

Cod. PAM.005.217



DB-KILLER Ø 40

Cod. PAM.005.010



Mufflers

4Track



4-TRACK (DESTRO-RIGHT)

Cod. PAM.005.244 (INOX)

Cod. PAM.005.245 (TITANIUM)

4-TRACK (SINISTRO-LEFT)

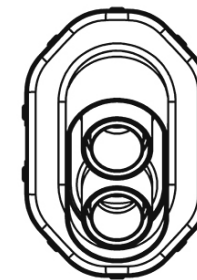
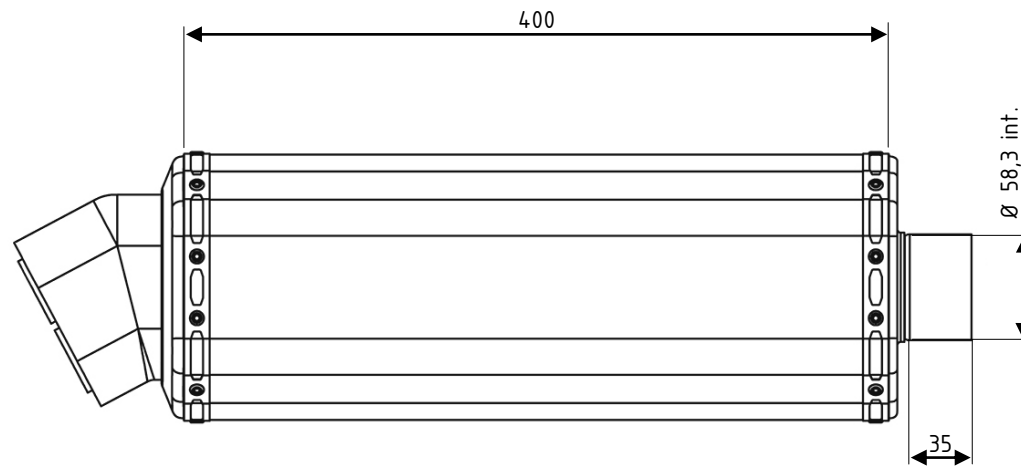
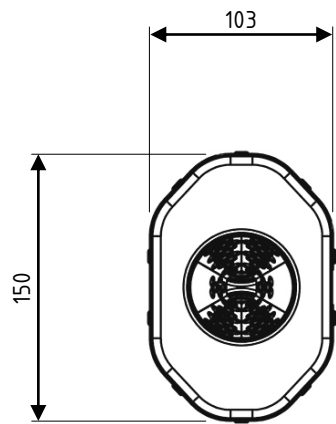
Cod. PAM.005.246 (INOX)

Cod. PAM.005.247 (TITANIUM)



STAINLESS BRACKET Thk 1.2

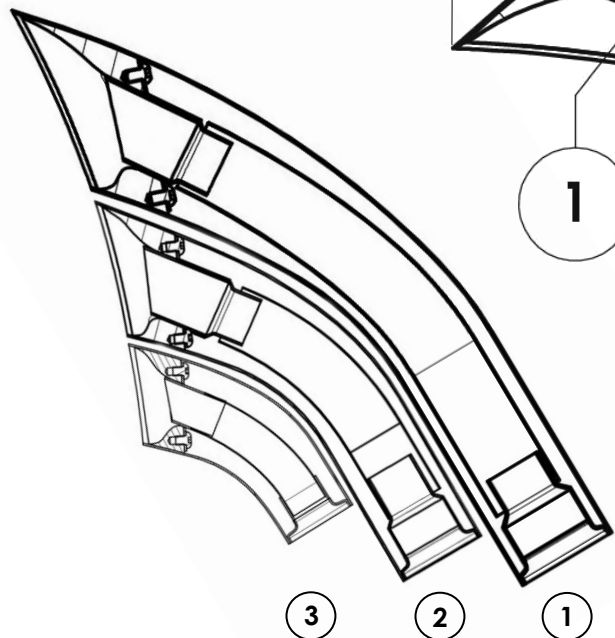
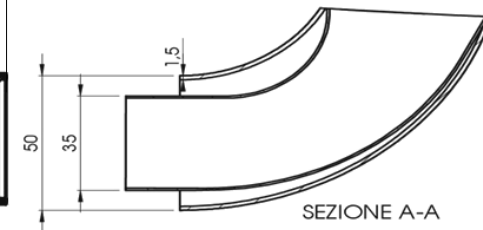
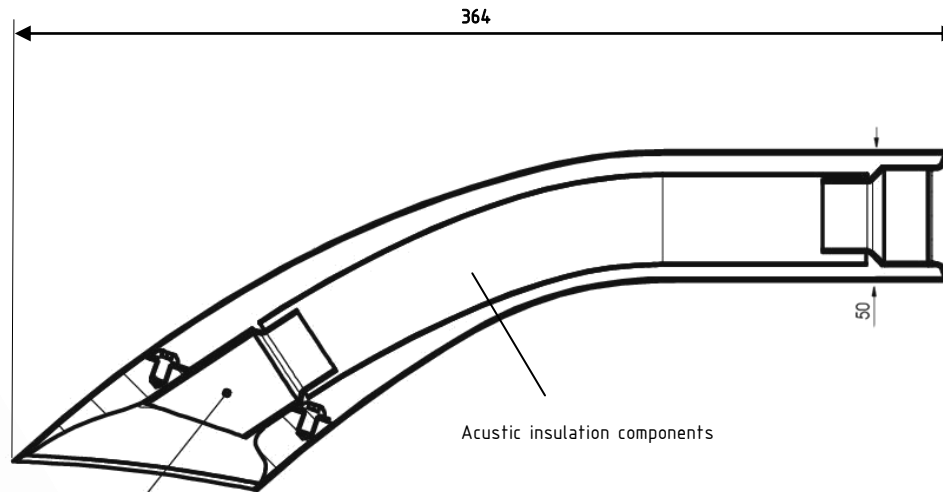
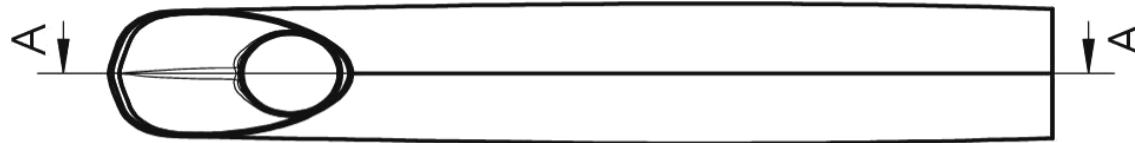
Cod. PAM.005.232





Mufflers

HYDRO-TRE
components



HYDRO 1 Ø 50

Cod. PAM.006.175

ELBOW 90° Ø 50

Cod. PAM.006.176

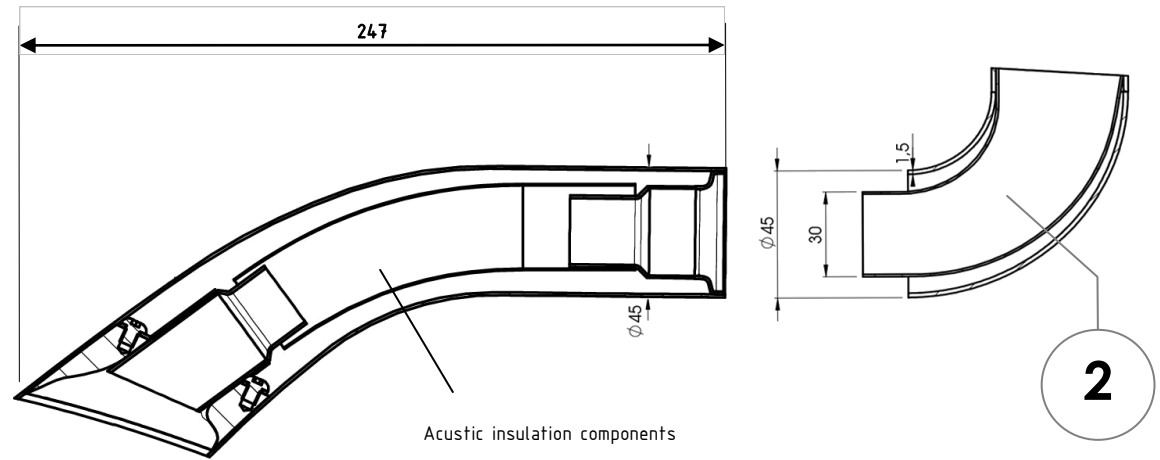


HYDRO 2 Ø 45

Cod. PAM.006.177

ELBOW 90° Ø 45

Cod. PAM.006.178

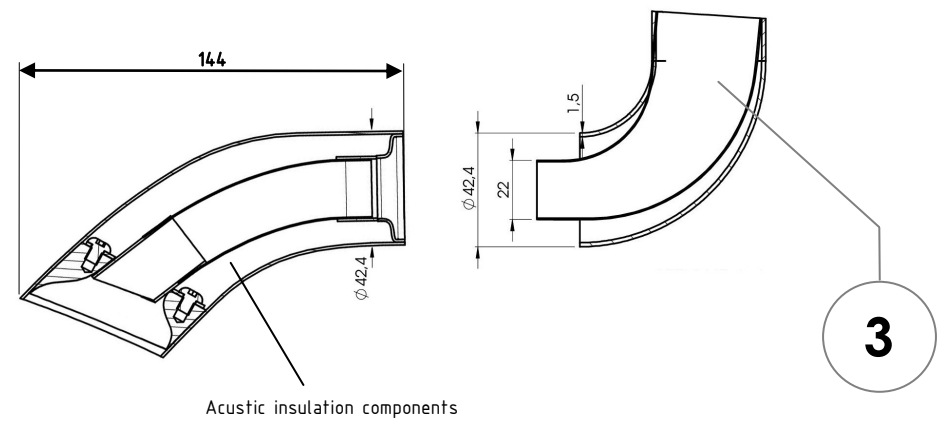


HYDRO 3 Ø 42,4

Cod. PAM.006.179

ELBOW 90° Ø 42,4

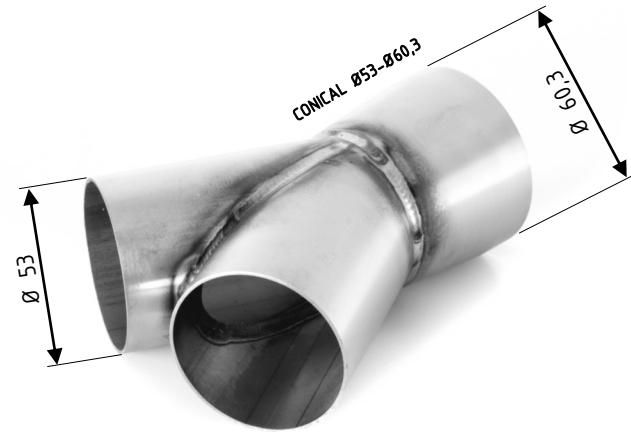
Cod. PAM.006.180





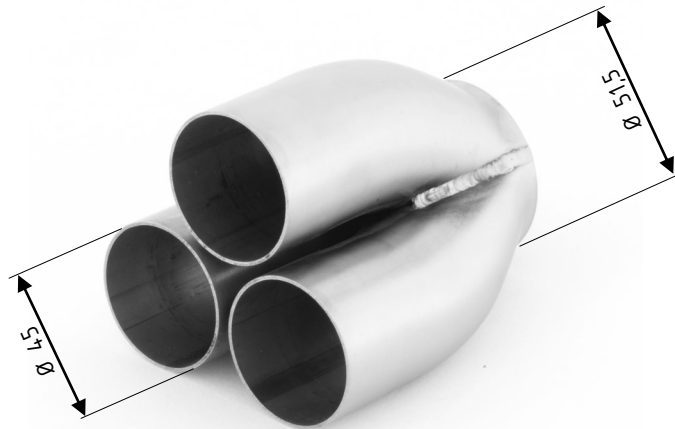
Components

INOX



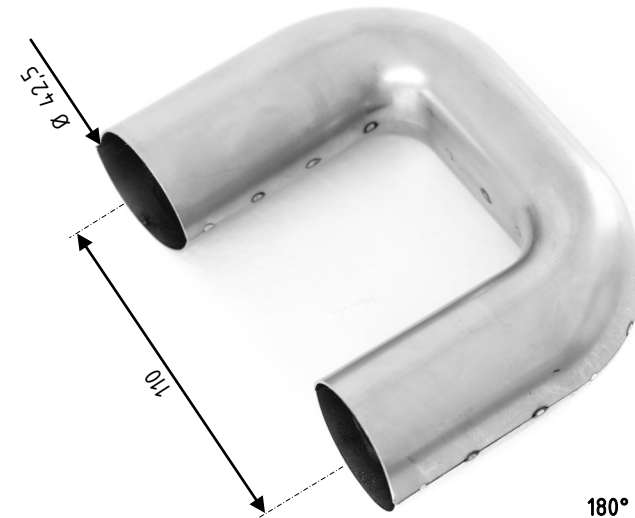
2 into 1 CONNECTOR

Cod. PAM.005.125



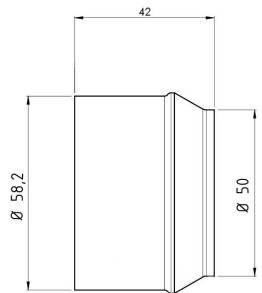
3 into 1 CONNECTOR

Cod. PAM.005.222



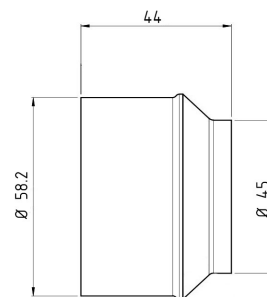
180° CURVE

Cod. PAM.005.221



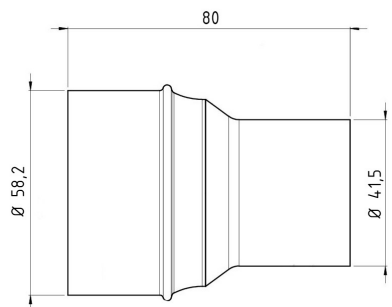
CONCENTRIC REDUCTION

Cod. PAM.005.115



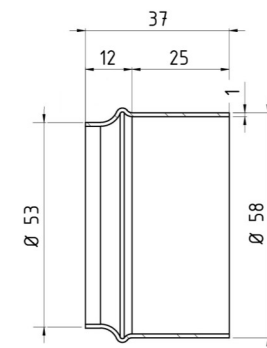
CONCENTRIC REDUCTION

Cod. PAM.005.117



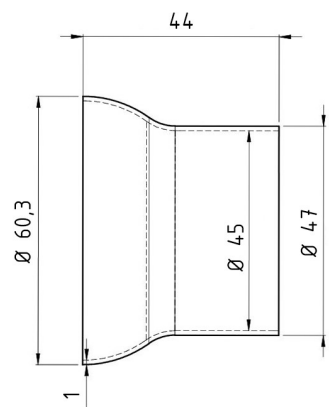
CONCENTRIC REDUCTION

Cod. PAM.005.114



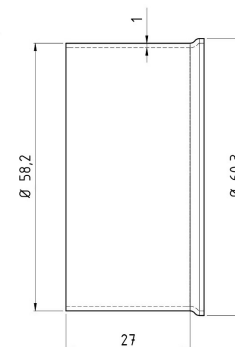
CONCENTRIC REDUCTION

Cod. PAM.005.119



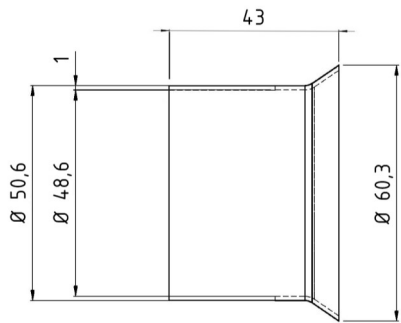
CONCENTRIC REDUCTION

Cod. PAM.005.107



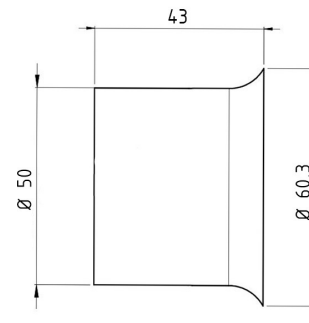
CONCENTRIC REDUCTION

Cod. PAM.005.118



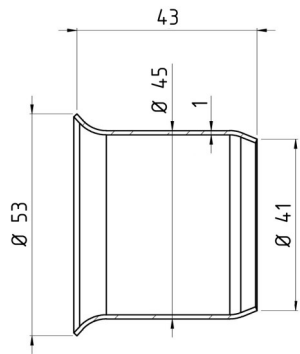
FEMALE WELDING JOINT

Cod. PAM.005.124



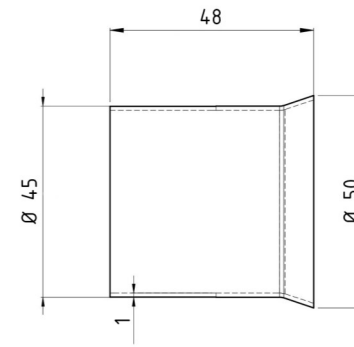
FEMALE WELDING JOINT

Cod. PAM.005.121



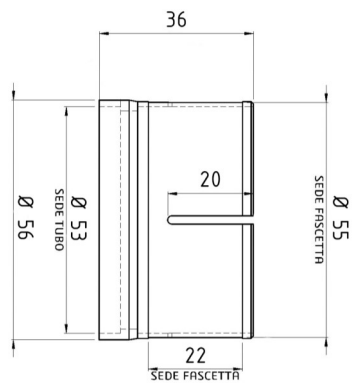
CONCENTRIC REDUCTION

Cod. PAM.005.109



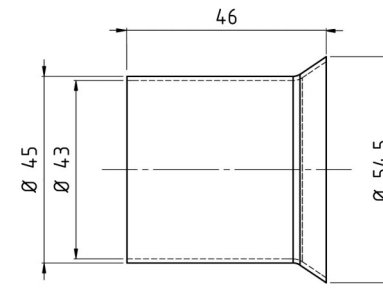
FEMALE WELDING JOINT

Cod. PAM.005.122



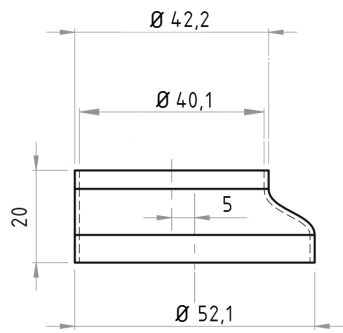
FEMALE WELDING JOINT

Cod. PAM.005.120



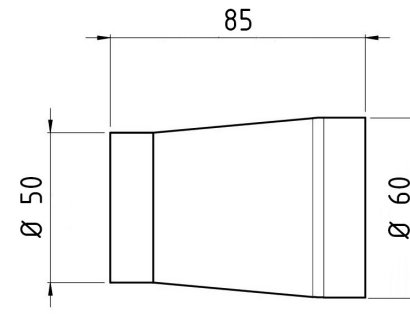
FEMALE WELDING JOINT

Cod. PAM.005.123



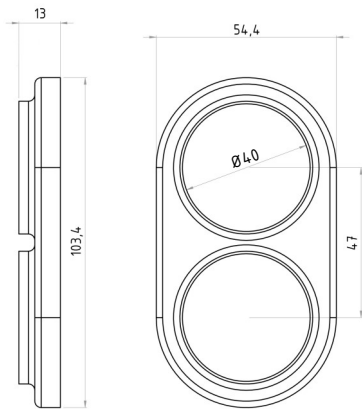
ECCENTRIC REDUCTION

Cod. PAM.005.223



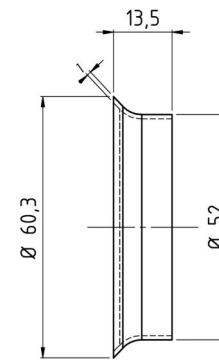
CONCENTRIC REDUCTION

Cod. PAM.005.112



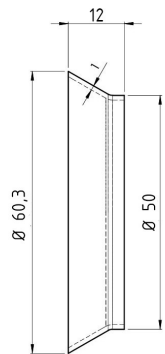
END-CAP

Cod. PAM.005.224



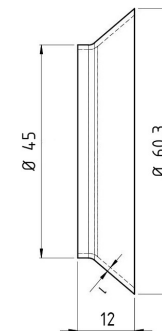
CONCENTRIC REDUCTION

Cod. PAM.005.110



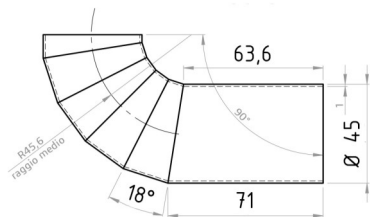
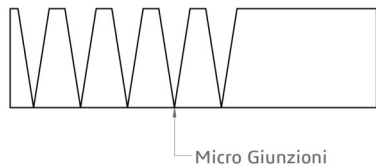
CONCENTRIC REDUCTION

Cod. PAM.005.116



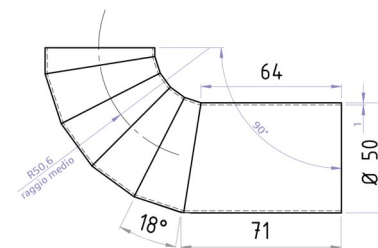
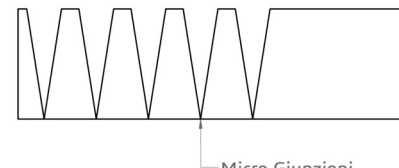
CONCENTRIC REDUCTION

Cod. PAM.005.113



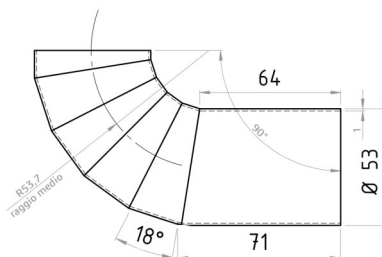
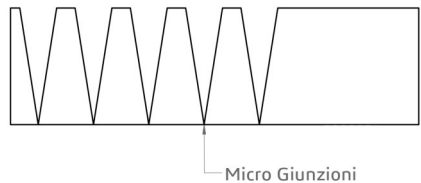
CURVE INTO WEDGES

Cod. PAM.005.189



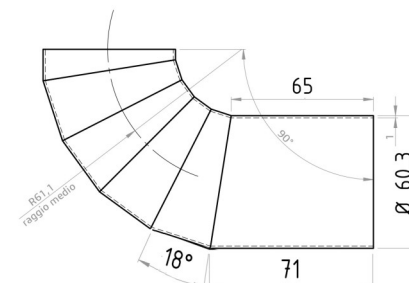
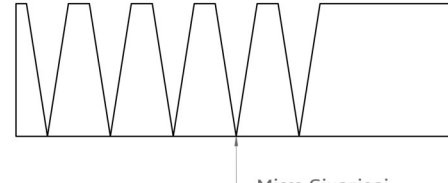
CURVE INTO WEDGES

Cod. PAM.005.190



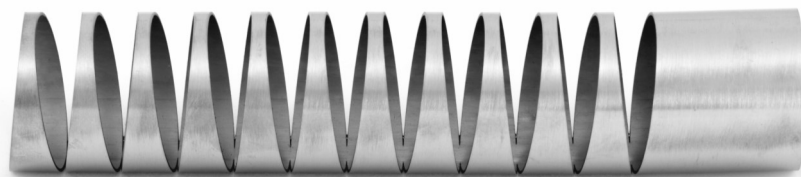
CURVE INTO WEDGES

Cod. PAM.005.191

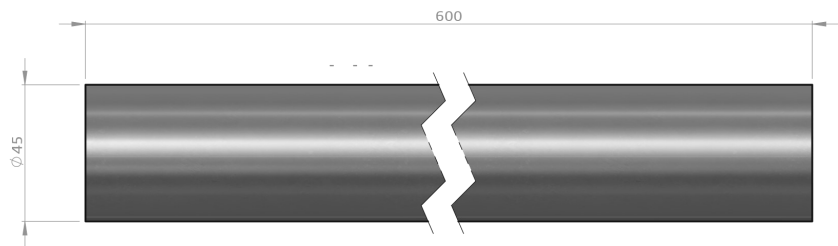


CURVE INTO WEDGES

Cod. PAM.005.192

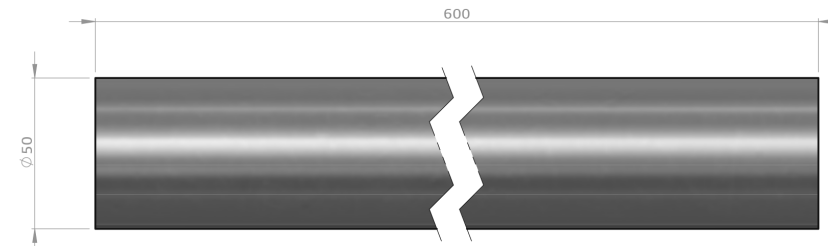


CURVE INTO WEDGES



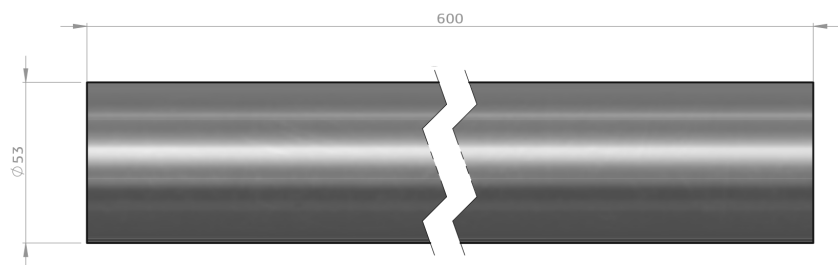
PIPE Ø 45 Sp.1 L 600

Cod. PAM.005.183



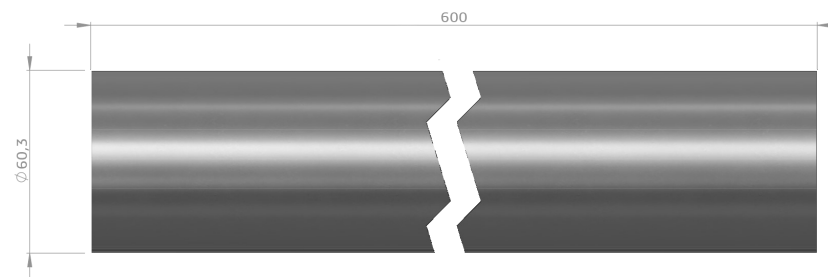
PIPE Ø 50 Sp.1 L 600

Cod. PAM.005.184



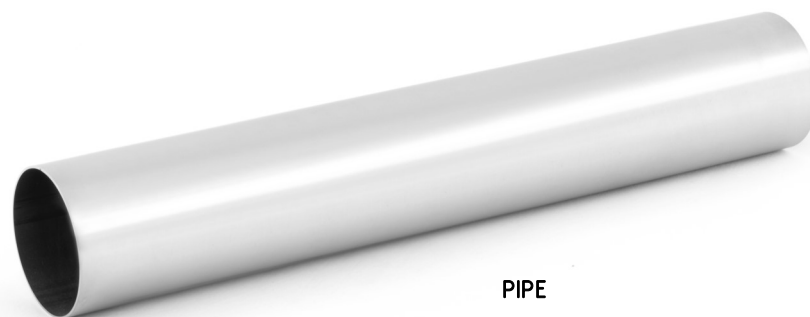
PIPE Ø 53 Sp.1 L 600

Cod. PAM.005.185

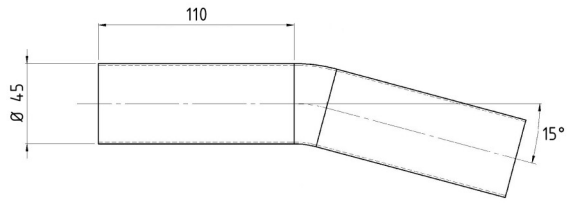


PIPE Ø 60,3 Sp.1,2 L 600

Cod. PAM.005.186

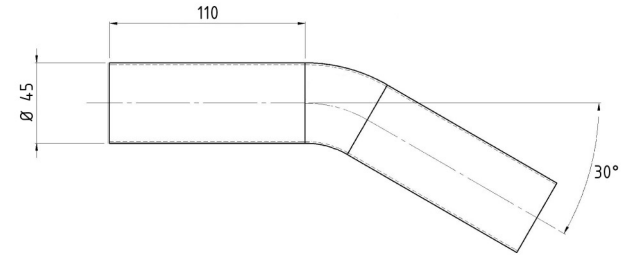


PIPE



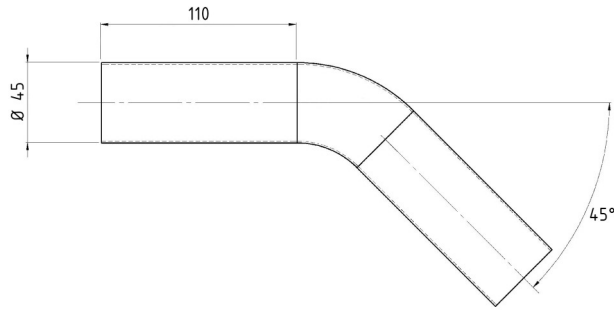
BENDE PIPE Ø 45x1 15°

Cod. PAM.005.145



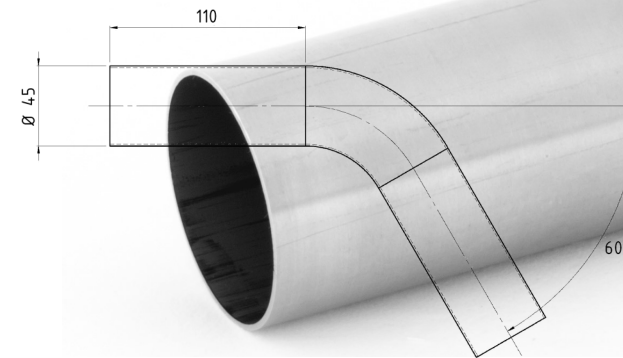
BENDE PIPE Ø 45x1 30°

Cod. PAM.005.144



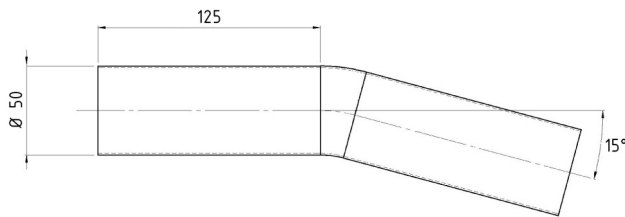
BENDE PIPE Ø 45x1 45°

Cod. PAM.005.143



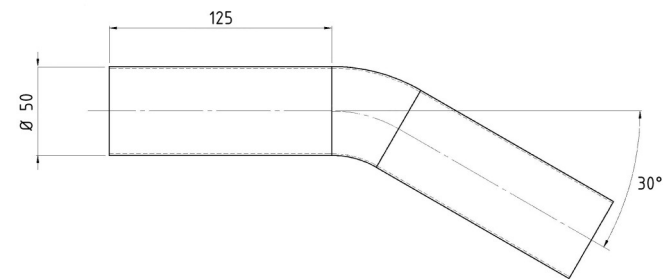
BENDE PIPE Ø 45x1 60°

Cod. PAM.005.142



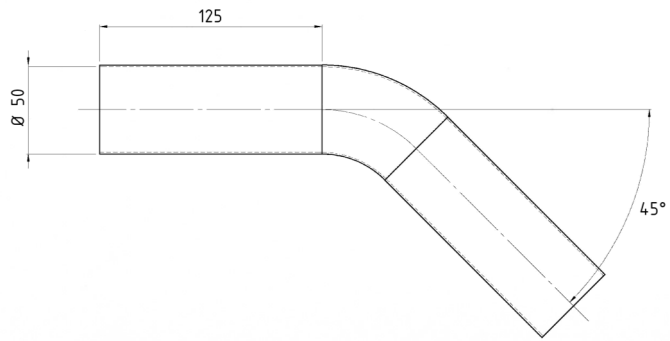
BENDE PIPE Ø 50x1 15°

Cod. PAM.005.131



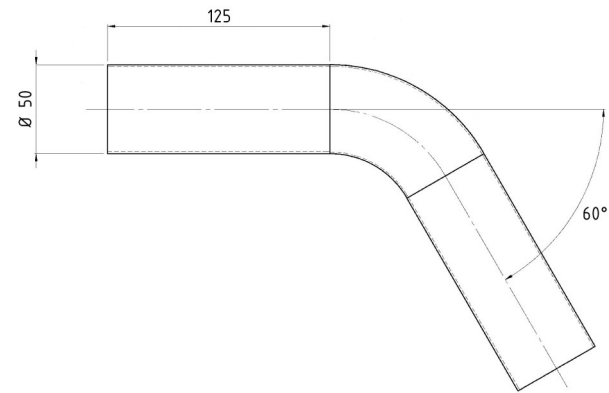
BENDE PIPE Ø 50x1 30°

Cod. PAM.005.130



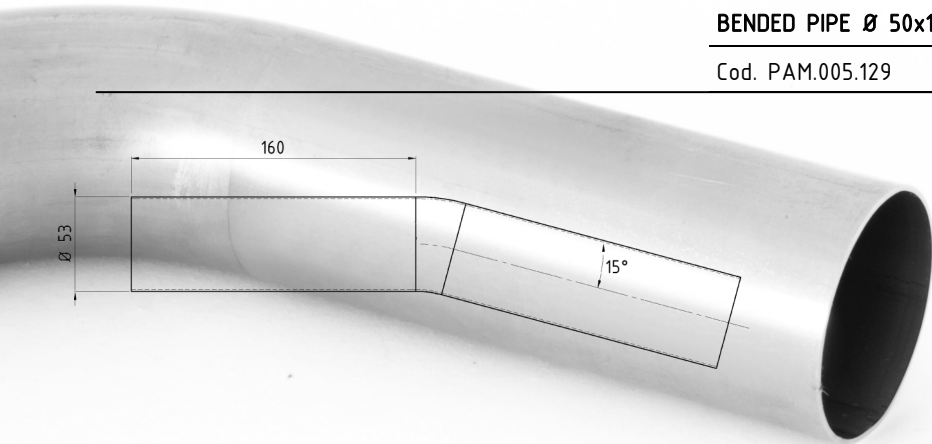
BENDE PIPE Ø 50x1 45°

Cod. PAM.005.129



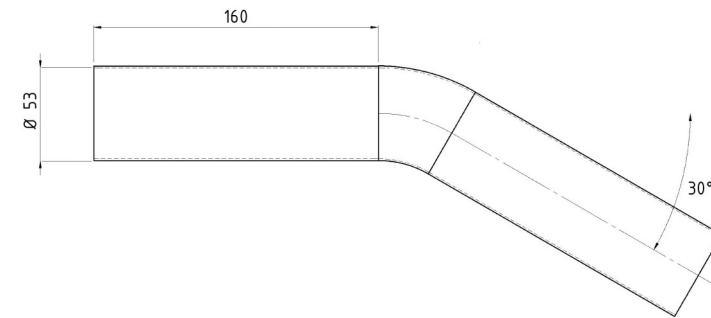
BENDE PIPE Ø 50x1 60°

Cod. PAM.005.132



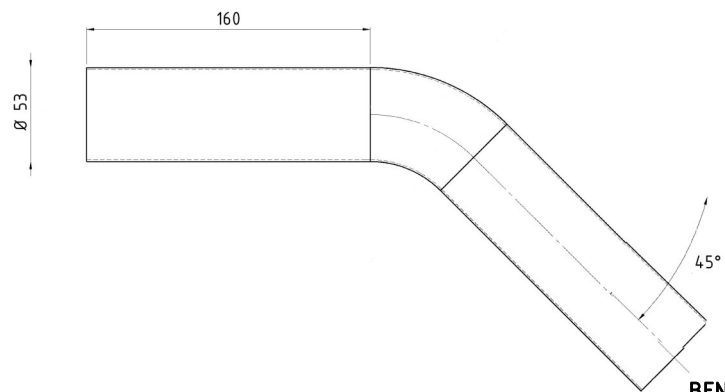
BENDE PIPE Ø 53x1 15°

Cod. PAM.005.134



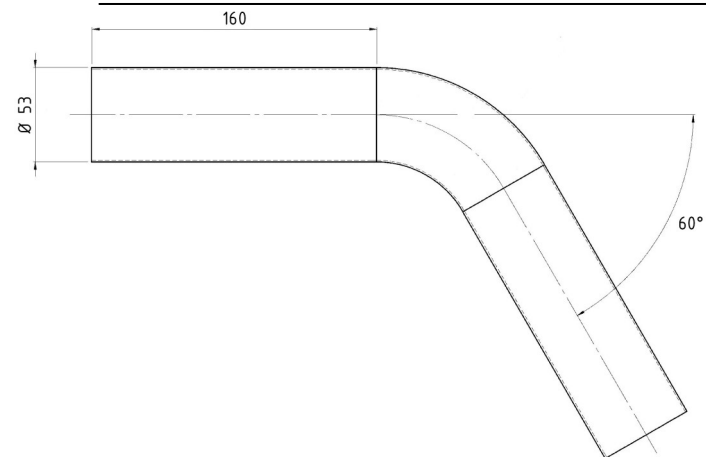
BENDE PIPE Ø 53x1 30°

Cod. PAM.005.135



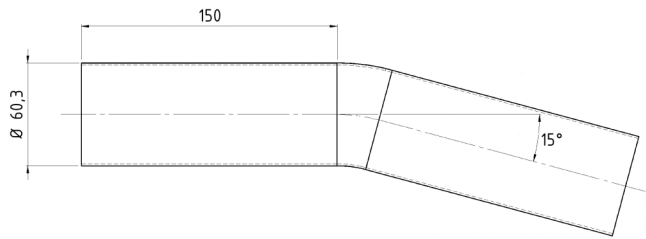
BENDE PIPE Ø 53x1 45°

Cod. PAM.005.136

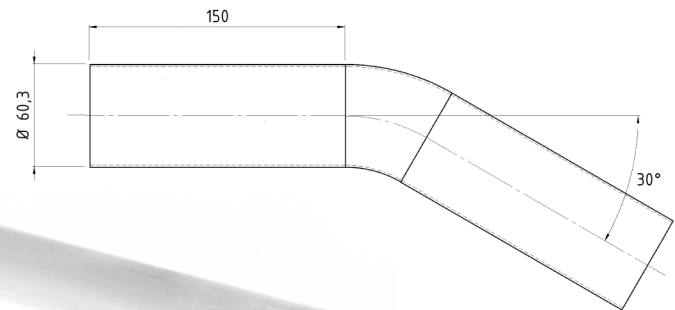


BENDE PIPE Ø 53x1 60°

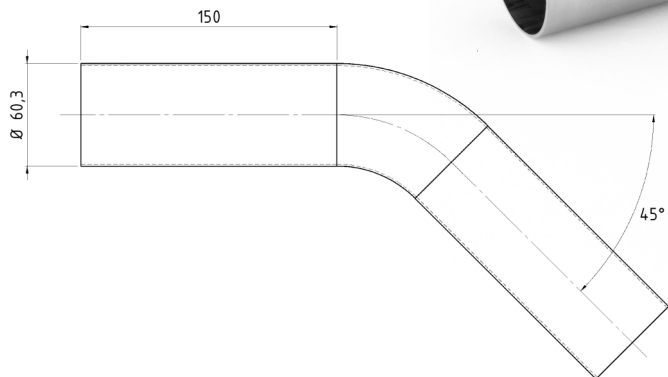
Cod. PAM.005.137



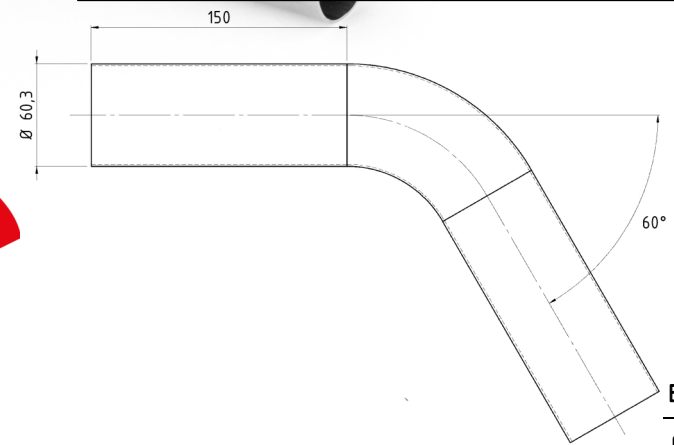
BENDED PIPE Ø 60,3x1,2 15°
Cod. PAM.005.138



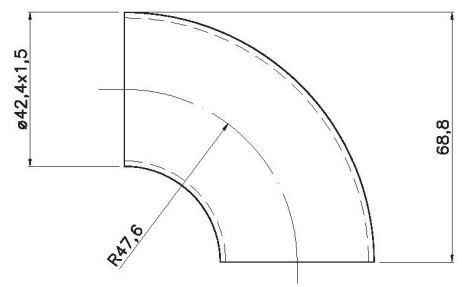
BENDED PIPE Ø 60,3x1,2 30°
Cod. PAM.005.139



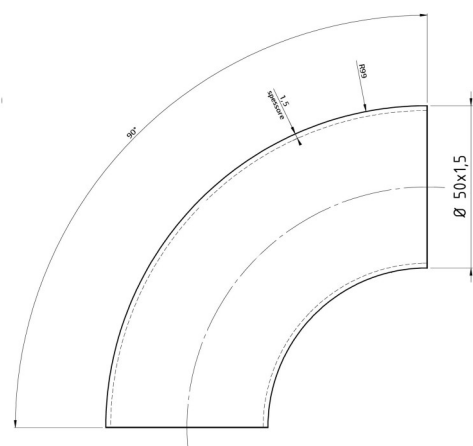
BENDED PIPE Ø 60,3x1,2 45°
Cod. PAM.005.140



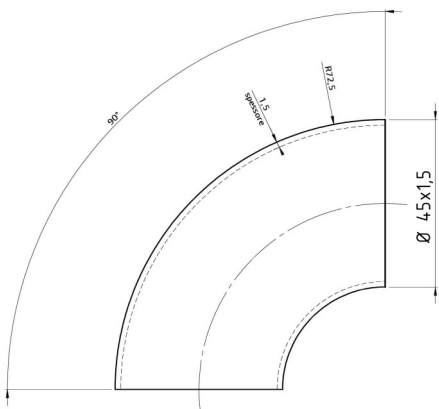
BENDED PIPE Ø 60,3x1,2 60°
Cod. PAM.005.141



ELBOW Ø 42,4x1,5 90°
Cod. PAM.005.126

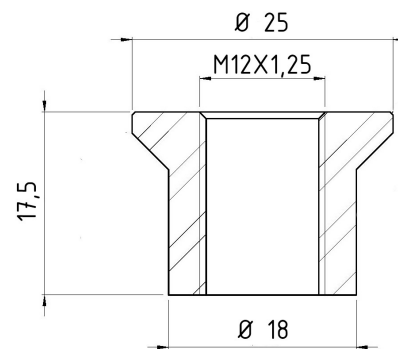


ELBOW Ø 50x1,5 90°
Cod. PAM.005.127



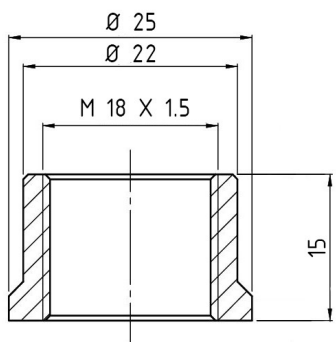
ELBOW Ø 45x1,5 90°

Cod. PAM.005.128



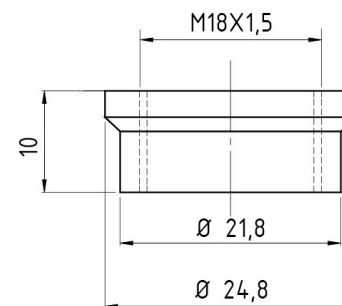
LAMBDA NIPPLE M12X1,5

Cod. PAM.005.164



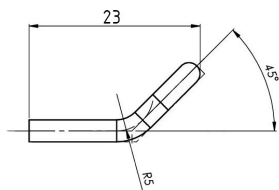
LAMBDA NIPPLE M18X1,5

Cod. PAM.005.165



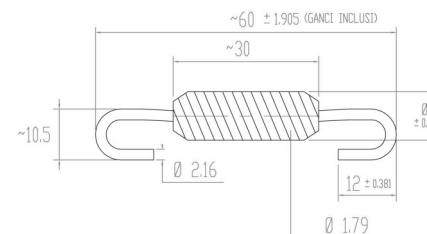
LAMBDA NIPPLE M18X1,5

Cod. PAM.005.163



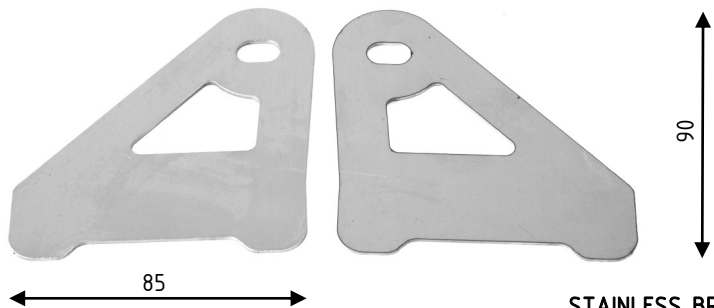
HOOK SPRING

Cod. PAM.005.159



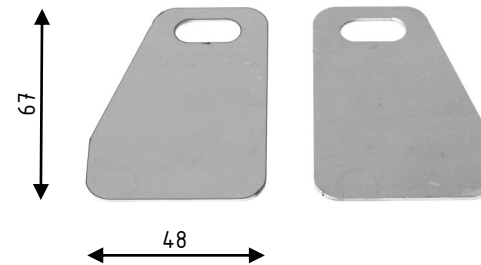
SPRING

Cod. PAM.005.154



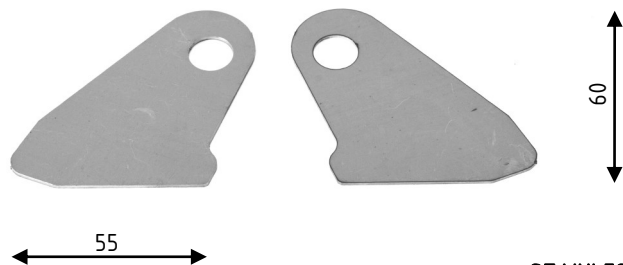
STAINLESS BRACKET Thk 1.2

Cod. PAM.005.207



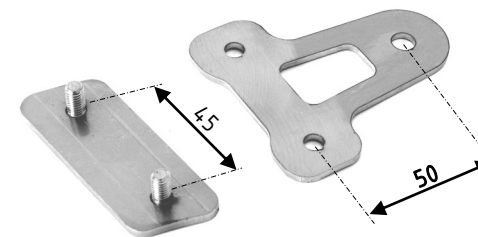
STAINLESS BRACKET Thk 1.2

Cod. PAM.005.208



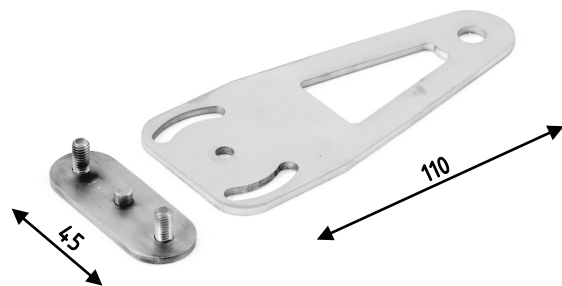
STAINLESS BRACKET Thk 1.2

Cod. PAM.005.009



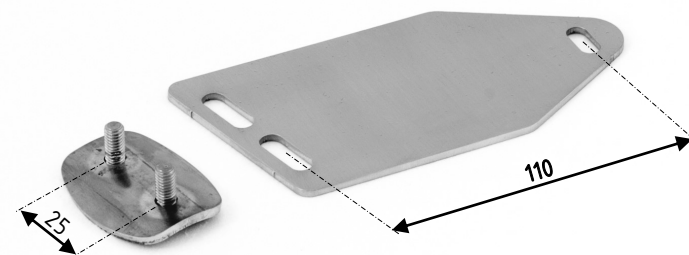
STAINLESS BRACKET Thk 2.5

Cod. PAM.005.216



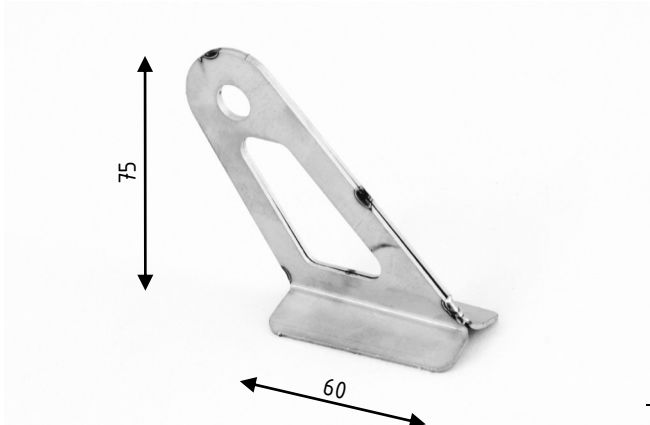
STAINLESS BRACKET Thk 1.2

Cod. PAM.005.217



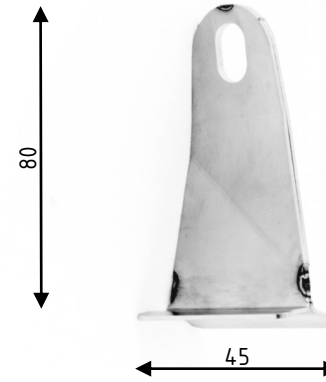
STAINLESS BRACKET Thk 2.5

Cod. PAM.005.218



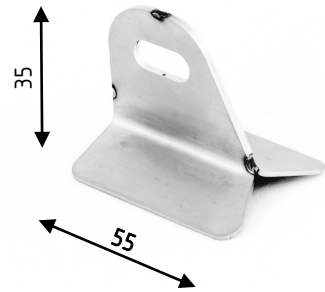
STAINLESS BRACKET

Cod. PAM.005.213



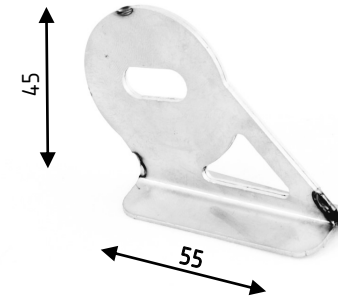
STAINLESS BRACKET

Cod. PAM.005.211



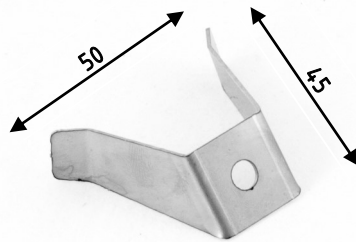
STAINLESS BRACKET

Cod. PAM.005.210



STAINLESS BRACKET

Cod. PAM.005.212



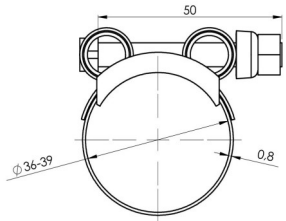
STAINLESS BRACKET

Cod. PAM.005.214



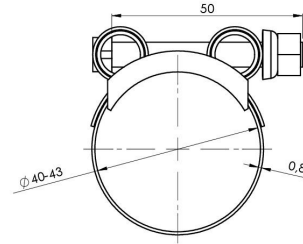
STAINLESS BRACKET

Cod. PAM.005.215



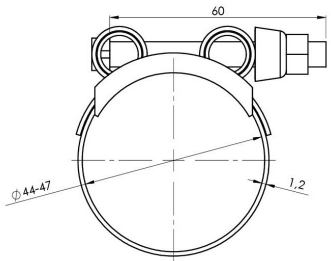
INOX CLAMP Ø 36-39

Cod. PAM.005.173



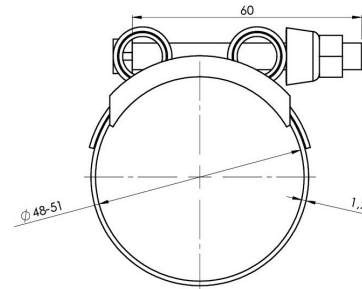
INOX CLAMP Ø 40-43

Cod. PAM.005.172



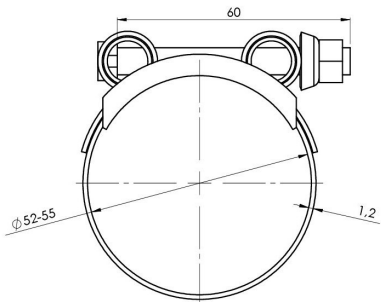
INOX CLAMP Ø 44-47

Cod. PAM.005.171



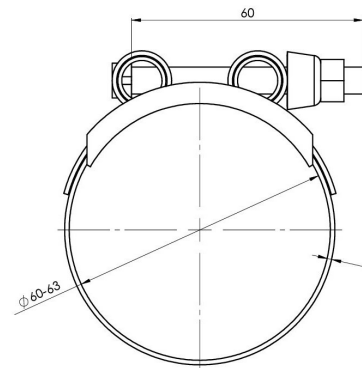
INOX CLAMP Ø 48-51

Cod. PAM.005.170



INOX CLAMP Ø 52-55

Cod. PAM.005.169



INOX CLAMP Ø 60-63

Cod. PAM.005.168



STICKER 26 x 8 mm

Cod. PAM.005.203

STICKER 138 x 45 mm

Cod. PAM.005.204



STICKER 26 X 8 mm

Cod. PAM.005.205

STICKER 138 X 45 mm

Cod. PAM.005.206



SERVICE
CERAMIC
COATING



TRATTAMENTO CERAMICO

A tutti i nostri clienti che desiderano uno scarico ceramizzato, offriamo il servizio "ceramic service". E' possibile richiedere un preventivo gratuito inviandoci una fotografia del pezzo. Il prodotto prima della ceramizzazione subirà un trattamento di pulizia superficiale mediante micropallinatura per cui ogni scritta superficiale verrà rimossa. Su richiesta è possibile incidere al laser il logo HP CORSE.

Il rivestimento ceramico ha migliorato oltre all'estetica, la durezza superficiale, l'abrasione e la resistenza, il tutto in un'applicazione ceramica molto sottile. Questo obiettivo è stato raggiunto mediante una tecnologia avanzata in resina che consente l'incorporazione delle ceramiche più performanti.

Disponibile in 2 colori, bianco e nero.

CERAMIC COATING

To all our customers who want a ceramic exhaust, we offer the "ceramic service". It is possible to request a free estimate by sending us a picture of the piece. The product before the ceramization will undergo a surface cleaning treatment by micro-shaping so that any superficial writing will be removed. On request it is possible to laser engrave the HP CORSE logo.

Ceramic coating improved hardness, abrasion and resistance, all in a thinner application. We have accomplished this by developing an advanced resin technology that enables the incorporation of the highest performance engineered ceramics.

Available in 2 modern, earth-tone colors black and white.



512 M

PLAN B
MOTORCYCLE





BARRALESTA

TORO MOTO





SCRAMBLER

ROUGH CRAFTS





SCRAMBLER

DEBOLEX

ENGINEERING





HP CORSE s.r.l.

C.F. P.I. 02668231208

Administrative headquarters and offices

Via Romitino 11-2, 40055 Castenaso (BOLOGNA)

By Steelform s.r.l.

C.F. P.I. 01698860309

Registered office

Via Max Piccini, 16-33061 RIVIGNANO-TEOR (UD)

Administrative headquarters and offices

Via Udine, 60-33061 RIVIGNANO-TEOR (UD)

<https://hpcorse.jp>

sales@hpcorse.jp

Tel. 072-256-4189